

Cooks Saint. Cuth

HOUSE & GARDEN

DECEMBER 1997
£2.70

**Over 100
fabulous presents**

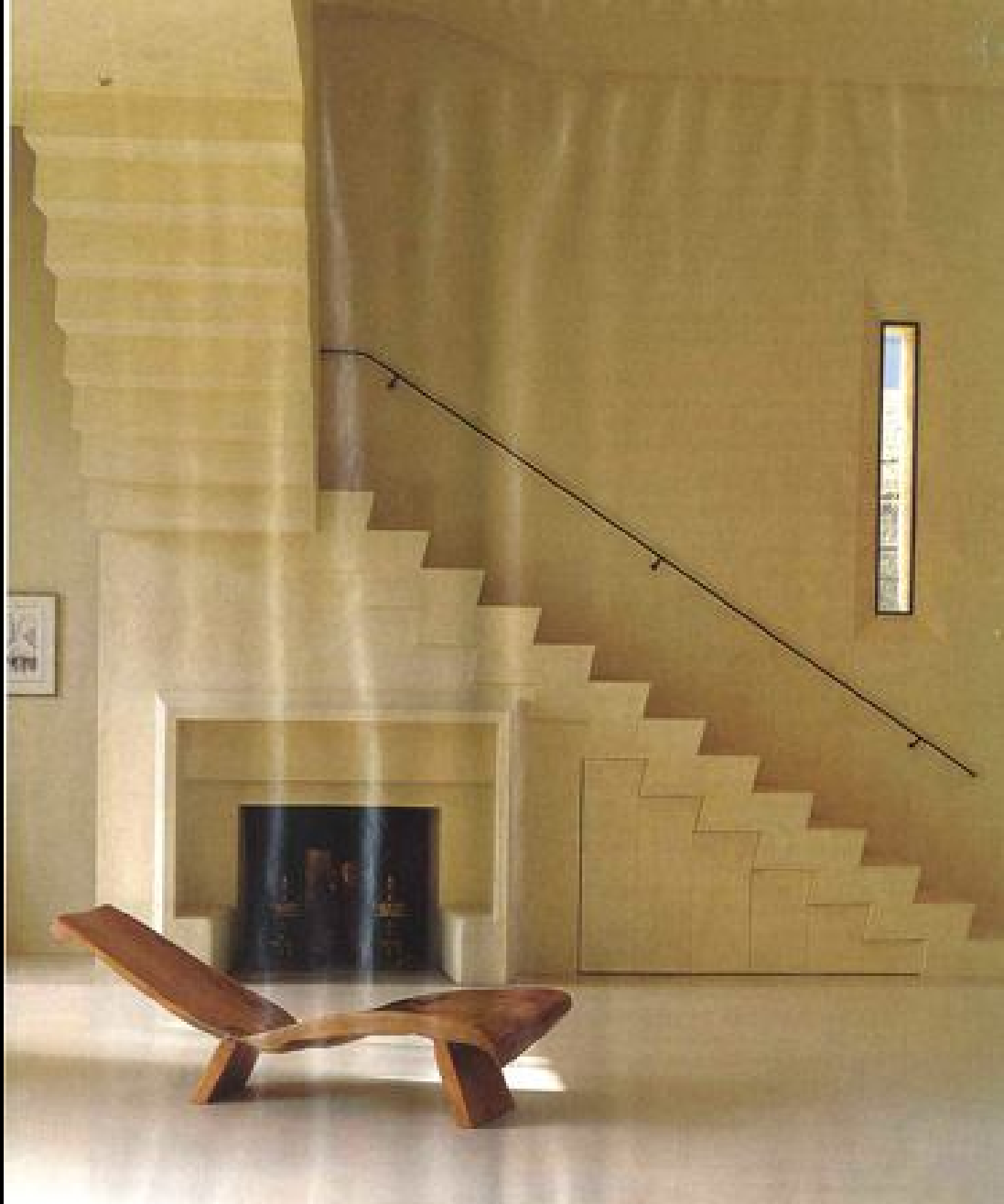
Secret
Woodland
Cottage
Luxuriant
Hillside garden
Medieval
Tower house

**Christmas
treats**

Gorgeous wrapping ideas
Delectable food Intimate Alpine hotels



Cills Saint Cills



AND MODERN

into a home and a studio. TEXT BY SUZANNE LOWRY. PHOTOGRAPHS BY TIM CLINCH AND CHRISTIAN SARRAMON

Gilles Saint-Aubin

OPPOSITE Hoses, fragrances and jasmine grow in an inner courtyard. BELOW LEFT Orange trees stand between the Doric columns of the colonnade. BELOW RIGHT Banana palms give a sub-tropical feel. THIS PAGE, RIGHT The atelier was rebuilt from scratch, using local materials and a vernacular style. BELOW Floor-to-ceiling windows flood the atrium with light. The Nancy school Art Nouveau chairs were bought in New York. Gilles designed the table himself



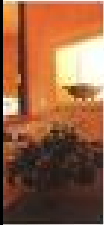
There was nothing much but ruins, with cows living in parts of them, but we loved the geography of the place



Ciutat Sant. Cugat



Gilles Saint-Collin



Gilles never trained as an architect but learnt his trade on the ground, working closely with artisans and always using the most natural materials

LEFT In Gilles and Camille's bathroom, a massive stone double basin strikes a sophisticatedly-primitive note.
MIDDLE The walls of the tower library are paneled in pale, limed oak. Gilles bought the Art-Deco leather armchairs in Brussels. *RIGHT* Above the chimneyplace in Gilles and Camille's bedroom, a painting is flanked by wall-to-wall brass wall sconces. The daybed is a copy of a Louis XV original

